

RSMeans Data Online

Cloud-based access to North America's leading construction cost database.

The screenshot displays the RSMeans Data Online web application interface. The top navigation bar includes 'Search Data', 'Manage Estimates', 'Square Foot Estimator', 'Life Cycle Cost', 'Cost Alerts and Trends', 'Reference Items', and 'My Favorites'. The main content area is divided into two primary sections: 'Square Foot Estimator' and 'Life Cycle Cost Estimator'.

Square Foot Estimator: This section shows search results for 'Window Sill' under the 'MasterFormat 2016' category. The search results table lists items such as 'Summary of Work', 'Models & Renderings', 'Professional Consultants', 'ARCHITECTURAL FEES', and 'For new construction'. To the right, a 'Model: Apartment, 1-3 Story with Brick Veneer / Reinforced Concrete' is selected. Key cost metrics are displayed: Building Cost of \$3,797,056.79, Location of GREENVILLE, SC, 3 Stories (Ea.), Cost per S.F. of \$168.76, Floor Area of 22,500, and Story Height of 10.00.

Life Cycle Cost Estimator: This section provides a 'Sustainment Model' with input fields for Source (RSMeans Data Online), Model (Apartment, 1-3 Story with...), Stories (3), Year Built (2018), Gross Square Feet (22,500), Story Height (10), Start Year (2018), Time Period (10), and Replacement Value (\$2,812,634.67). Below this is an 'Assembly Information' table with columns for Quantity, Unit, Description, Frequency, M&R Task, M&R Task Cost, PM Task, and Annual Cost (2019, 2020, 2021).

Quantity	Unit	Description	Frequency	M&R Task	M&R Task Cost	PM Task	Annual Cost	2019	2020	2021
1.0000	Ea.	Replace Switch Gear, 800A	30	D50132002	\$22,432					
1.0000	Ea.	Maintenance and inspection lighting panel, indoor	3	D50132000	\$45.00					\$45
2.0000	Ea.	Switchboard, annualized	1			D50152101	\$136.00	\$136	\$136	\$136
1.0000	Ea.	Switchboard, with air circuit breaker, annualized	1			D50152141	\$1,225.00	\$1,225	\$1,225	\$1,225

Plan your next budget with accurate prices and insight.

Estimate in great detail or at a conceptual level.

Validate unfamiliar costs or scopes of work.

Maintain existing buildings with schedules and costs.

RSMeans data
from **GORDIAN**®

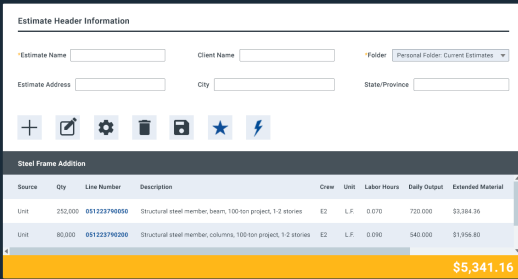
Learn more rsmeans.com/online

There are three tiers of RSMeans Data Online designed to equip users with the appropriate cost tools to execute a variety of different construction projects.

	Core	Complete	Complete Plus
Level of Cost Detail			
Unit price costs	●	●	●
Assemblies costs		●	●
Square foot model costs		●	●
Labor Rates/Wages			
Union + data set selection	●	●	●
Open shop + data set selection		●	●
Ability to Edit			
Create/edit unit prices		●	●
Create/edit assembly prices		●	●
Estimate Tools			
Unit price estimate creation	●	●	●
Assembly estimate creation		●	●
Square foot estimator with new models		●	●
Square foot estimator with renovation models			●
Life cycle costing estimator			●
Reporting Tools			
Export estimates via PDF/Excel and share	●	●	●
Customize export estimate		●	●
Search Tools			
Keyword search/tag favorite items	●	●	●
Browse by MasterFormat/UniFormat	●	●	●
Create alerts for price updates		●	●
Timespan of Data			
Current year, 12 months from purchase by quarter	●	●	●
3 years back from current date		●	●
Track data trends over time		●	●
Full RSMeans data history			●
Customize Data			
Add your own custom wage rates and apply to data set		●	●
Edit equipment rental prices		●	●
Predictive Cost Data			
Available through square foot estimator			●

RSMMeans Data Online **Core**

The Core tier of RSMMeans Data Online provides reliable construction cost data along with the tools necessary to quickly access costs at the material or task level. Users can create unit line estimates with RSMMeans data from Gordian and share them with ease from the web-based application.



rsmeans.com/core

Key Features:

- Search
- Estimate
- Share

Data Available:

16 datasets and packages curated by project type

RSMMeans Data Online **Complete**

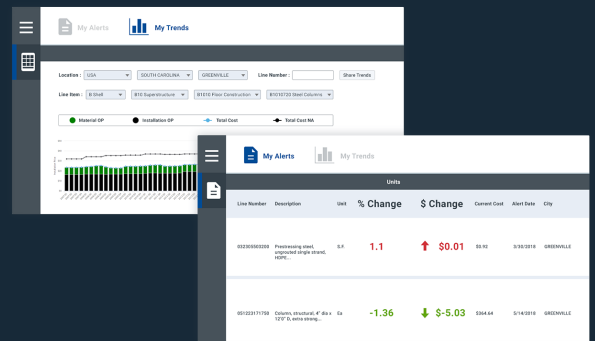
The Complete tier of RSMMeans Data Online is designed to provide the latest in construction costs with comprehensive tools for projects of varying scopes. Unit, assembly or square foot price data is available 24/7 from the web-based application. Harness the power of RSMMeans data from Gordian with expanded features and powerful tools like the square foot model estimator and cost trends analysis.

Key Features:

- Alerts
- Square Foot Estimator
- Trends

Data Available:

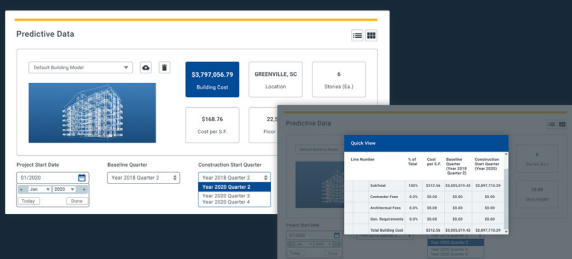
20 datasets and packages curated by project type



rsmeans.com/complete

RSMMeans Data Online **Complete Plus**

The Complete Plus tier of RSMMeans Data Online was developed to take project planning and estimating to the next level with predictive cost data. Users gain access to an exclusive set of tools and features and the most comprehensive database in the industry. Leverage everything RSMMeans Data Online has to offer with the all-inclusive Complete Plus tier.



rsmeans.com/completeplus

Key Features:

- Predictive Cost Data
- Life Cycle Costing
- Full History

Data Available:

Full library and renovation models

**Localize more than 85,000 material, equipment and labor costs
across North America with RSMeans Data Online.**



About Gordian

Gordian is the world's leading provider of facility and construction cost data, software and services for all phases of the building lifecycle. A pioneer of Job Order Contracting (JOC), Gordian's solutions also include our proprietary RSMeans data and Sightlines facility benchmarking and analysis. From planning to design, procurement, construction and operations, Gordian's solutions help clients maximize efficiency, optimize cost savings and increase building quality.

For more information, visit rsmeans.com or gordian.com

GORDIAN®

